

ESTIMATE

**Name of work :- Proposed Construction of Cleaning & Grading Shed In G.no.185 Paiki,
For Sayaji Agro Producer Co. ltd., At- Shelka Dhanora, Tal-Kalamb, Dist: Usmanabad
(MH)**

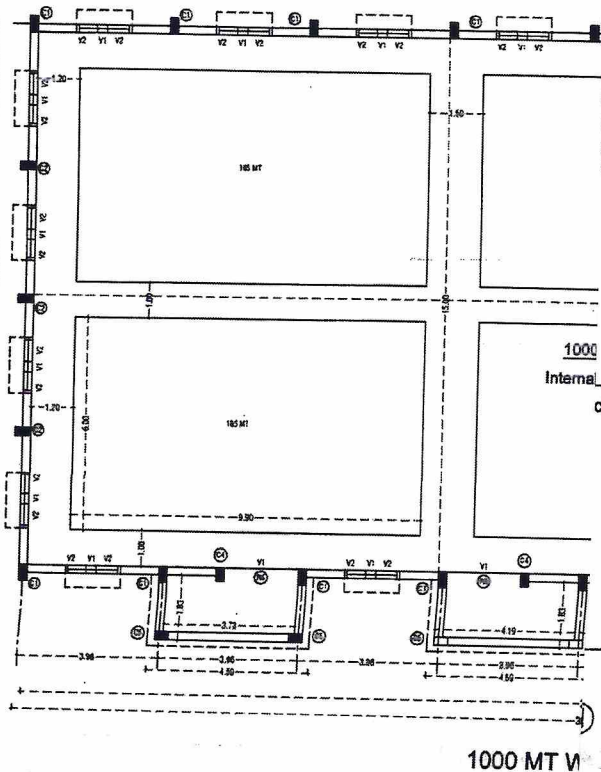
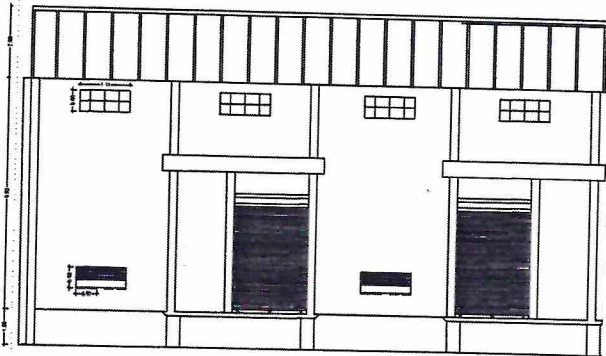
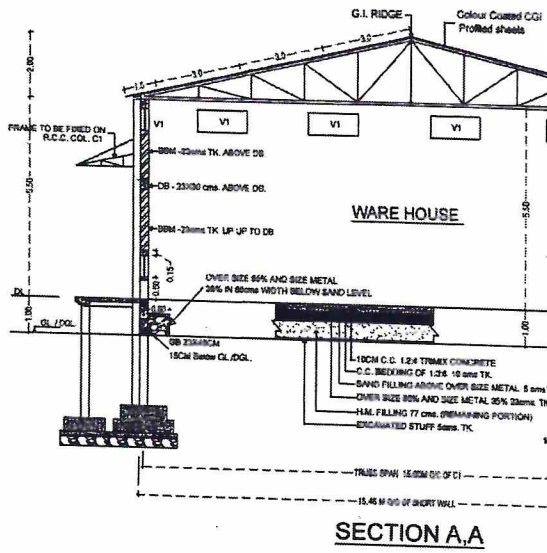
Estimated Cost of Works (Rs.) :- 3291567.00

Rupees thirty-two lakhs ninety-one thousand five hundred sixty-seven and paise nil only

HOUSE BUILDING UNIT 1000MT

Work :- Proposed Construction of 1000MT Warehouse Unit
 In G.no.185 Paiki, For Sayaji Agro Producer Co. Ltd,
 ka Dhanora, Tal-Kalamb, Dist: Usmanabad (MH)

Sayaji Shivaji Shelke



Declaration

I/We signed hereby confirm that I/we would abide by plans. I/We would execute the structure as per plans. Also I/We would execute the work under supervision of proper technical person so as to ensure quality and safety at the work site.

Internal owner [S] name and signature

FOR: Mr. Sayaji Shivaji Shelke

Chartered Engineer/Supervisor name and signature

Gaurav Rajendra Bhaskar
Gaurav Rajendra Bhaskar
 B.E.(Civil) A.M.I.E.
 Chartered Engineer
 AM3023322
 Chartered Engineer

Sai Consultant
SAI CONSULTANT
 Consulting Civil Engineer
 Rahuri, Dist. Ahmednagar
 Registration/ License no of
 Arch./Lic.Eng./Supervisor



SAI CONSULTANTS

CONSULTING CIVIL ENGINEERS &
 CONTRACTORS.

RAHURI
 L.C.NO.ADTP-A/C-5/111.
 MO.9970253888, 9881964333.

1000 MT W



SAI CONSULTANT'S

Consulting Civil Engineer, Builders & Developers,
Approved Valuers, Chartered Engineer & Govt. Contractors.

Shop no.2, Shradha Building, Gokul Colony,
Collage Road, Rahuri, Tal-Rahuri, Dist-A'Nagar.

Mo.9970253888, 9552183333
email -saiconsultants333888@gmail.com

Ref no.

Date:-

Name of work :- Proposed Construction of Cleaning & Grading Shed In G.no.185 Paiki,
For Sayaji Agro Producer Co. Ltd., At- Shelka Dhanora, Tal-Kalamb, Dist: Usmanabad
(MH)

RECAPITUALTION SHEET

1	Work Portion (Part A)	Rs.	2643178.00
2	Add Royalty	Rs.	36034.00
3	Add Testing Charges	Rs.	14280.00
4	Add. 1.00 % Insurance on Part A	Rs.	26432.00
5	Add.18.00 % GST Part A	Rs	475772.00
	Total Rs.		3195696.00
6	Add. 3% Contigencies on Total	Rs	95871.00
	Say Rs.		3291567.00

Rupees thirty-two lakhs ninety-one thousand five hundred sixty-seven and paise nil only


Chartered Engineer
Gaurav Rajendra Bhaskar
B.E.(Civil) A.M.I.E.
Chartered Engineer
AM3023322


Consulting Engineer
SAI CONSULTANT
Consulting Civil Engineer
Rahuri, Dist. Ahmednagar



Name of work :- Proposed Construction of Cleaning & Grading Shed In G.no.185 Paiki, For Sayaji Agro Producer Co. ltd., At- Shelka Dhanora, Tal-Kalamb, Dist: Usmanabad (MH)

ABSTRACT

Quantity	I.No	Item of work	Rate	unit	Amount
27.00	1	Excavation for foundation in earth, soil of all types, sand, gravel and soft murum, including removing the excavated material up to a distance of 50 m.beyond the building area & stacking and spreading as directed, dewatering, preparing the bed for the foundation and necessary back filling, ramming, watering Including shoring and strutting etc. complete. (LIFT UPTO 1.5 M.) By Mechanical Means	207.00	Cubic Metre	5589.00
13.50	2	Excavation for foundation in Hard murum in cluding removing the excavated material upto adistance of 50 metres beyond the building area and stacking and spreading as directed, dewatering, preparing the bed for the foundation and necessary backfilling, ramming, watering including shoring and strutting etc. complete. (Lift from 1.5 to 3.0m.) By Mechanical Means	284.00	Cubic Metre	3834.00
43.55	3	Providing dry trap/ granite/ quartzite/ gneiss rubble stone soiling 15 cm to 20 cm thick including hand packing and compacting complete. Spec.No. : Bd.A.12 Page No. 264 ;	1884.27	Cubic Metre	82059.96
40.50	4	Filling in plinth and floors with approved excavated material in 15cm. to 20cm. layersincluding watering and compacting etc. complete.	120.00	Cubic Metre	4860.00
66.72	5	Filling in plinth and floors with contractors material/ brought from outside and approved by Engineer in charge in layers of 15 cm to 20 cm including watering and compaction etc.complete.	1047.22	Cubic Metre	69870.52
9.47	6	Providing and filling in the foundation with sand of approved quality including watering, compacting etc. complete. (To be executed with prior approval of Superintending Engineer)	2505.15	Cubic Metre	23723.77
18.93	7	Providing and laying Cast in situ/ Ready Mix cement concrete in M-10 of trap/granite/quartzite/ gneiss metal for foundation and bedding including bailing out water, Steel centering, formwork, laying/pumping, compacting, roughening them if special finish is to be provided, finishing if required and curing complete ,with fully automatic microprocess or base dPLCwith SCADA enable dreversible Drum Type mixer/ concrete Batch mix plant (Panmixer) etc.complete. With fine aggregate (Crushed sand VSI Grade)	6349.36	Cubic Metre	120193.38

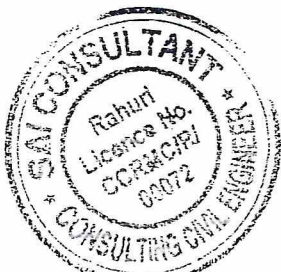
Quantity	I.No	Item of work	Rate	unit	Amount
6.69	8	Providing and laying in situ cement concrete of M-25 grade of trap / granite/quartzite/gneiss metal for R.C.C. work like raft, grillages, strips, foundations and footings of R.C.C.columns and steel stanchions including bailing-out water manually, including centering formwork of plywood / steel, compaction, covering newly laid concrete by gunny bag, plastic or tarpaulin, finishing the formed surface with cement mortar 1:3 of sufficient minimum thickness to give a smooth and even surface or roughening if special finish is to be provided and curing etc complete. (Excluding reinforcement) The cement mortar 1:3 plaster is considered for rendering uneven and honeycombed surface only. (Wooden planks / shuttering will not be allowed) Spec.No.:Bd.F.2 Page No. 298 /IS 456 (1978)	7775.02	Cubic Metre	52014.88
3.58	9	Providing and laying Cast in situ/Ready Mix cement concrete M-25 of trap / granite /quartzite/ gneiss metal for R.C.C. columns as per detailed designs and drawing or as directed including steel centering, formwork, cover blocks, laying/pumping, compaction finishing the formed surfaces with cement mortar 1:3 of sufficient minimum thickness to give a smooth and even surface or roughening if special finish is to be provided and curing etc. complete.(Excluding reinforcement and structural steel).with fully automatic micro processor based PLC with SCADA enabled reversible Drum Type mixer/ concrete Batch mix plant (Pan mixer) etc. complete. With fine aggregate (Natural Sand / Crushed sand VSI Grade finely washed etc)	14455.02	Cubic Metre	51748.97
9.15	10	Providing and laying Cast in situ/Ready Mix cement concrete M-25 of trap / granite /quartzite/ gneiss metal for R.C.C. beams and lintels as per detailed designs and drawings or as directed including steel centering, formwork, cover blocks, laying/pumping, compaction and roughening the surface if special finish is to be provided and curing etc. complete. (Excluding reinforcement and structural steel). with fully automatic micro processor based PLC with SCADA enabled reversible Drum Type mixer/ concrete Batch mix plant (Pan mixer) etc. complete. With fine aggregate (Natural Sand / Crushed sand VSI Grade finely washed etc)	12940.02	Cubic Metre	118401.18
1.49	11	Providing and fixing in position TMT - FE - 500 bar reinforcement of various diameters for R.C.C. pile caps, footings, foundations, slabs, beams columns, canopies, staircase, newels, chajjas, lintels, arches, copings, fins, arches etc. as per detailed designs, drawings and schedules. including cutting, bending, hooking the bars, binding with wires or tack welding and supporting as required complete.	89703.00	Metric Tonne	133657.47

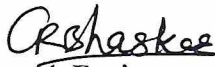


Quantity	I.No	Item of work	Rate	unit	Amount
3.23	12	Providing Brick masonry in cement mortal 1.6 using second Class Burnt Bricks in foundation and plinth of inner walls/ in plinth of external walls including bailing out water manually, striking joints on unexposed faces ,watering and scaffolding complete Bd. G. 1, Page No.313,	7873.70	Cubic Metre	25432.05
18.82	13	Providing second class Burnt Brick masonry with conventional/ I.S. type bricks in cement mortar 1:6 in superstructure including striking joints, raking out joints, watering and scaffolding etc. Complete	8112.70	Cubic Metre	152681.01
152.68	14	Providing sand faced plaster externally in cement mortar using approved screened sand, in all positions including base coat of 15 mm thick in cement mortar 1:4 using waterproofing compound at 1 kg per cement bag curing the same for not less than 2 days and keeping the surface of the base coat rough to receive the sand faced treatment 6 to 8 mm thick in cement mortar 1:4 finishing the surface by taking out grains and curing for fourteen days scaffolding etc.complete.	651.70	Square Metre	99501.56
7.20	15	Providing and fixing steel window of various sizes as per detailed drawing without hotdip zinc coating, with out ventilators, including fabricating/ glazing with plain/ obscured glass panels of approved type and quality, iron oxidised fixtures and fastenings, finishing with oil painting two coats complete (with guard bars 12 mm square at 10 cm c/c.)	4874.00	Square Metre	35092.80
152.68	16	Providing and applying white-wash in one coat on old/ new plastered or masonry surfaces and asbestos cement sheets including scaffolding and preparing the surface by brushing and brooming down etc. complete.	8.00	Square Metre	1221.44
152.68	17	Providing and applying plastic emulsion paint of approved quality, colour and shade to old and new surfaces in two coats including scaffolding, preparing the surface. (excluding the primer coat) etc. complete.	80.00	Square Metre	12214.40
31.50	18	Providing and fixing rolling shutter fabricated from steell at hsofminimum thickness 0.9mm with lock plate of 3.15 mm thickness reinforced with 35x35x5mm angle section fitted with sliding bolts and handles for both sides, deep M.S.channel section of depth and thickness not less than 65mm and 3.15mm respectively with hold fastarr angements, M.S.Bracket plate 300x300x3.15mm minimum size and shape with square bar, suspension shaft of minimum 32mm diameter, hood cover of M.S. sheet not less than 0.9mm thickness and of any size attopand safety device sincluding mechanical gear operation arrangement consisting of worm gear wheels and worms of high grade castir on or mild steel and one coat of redlead primer etc. complete.(I.S.62481979) (Without mechanical gear)	5308.00	Square Metre	167202.00



Quantity	I.No	Item of work	Rate	unit	Amount
179.62	19	Providing and laying in situ cement concrete M20 with tremix treatment for 100 mm thickness for flooring with groove cutting of 4mm wide and 20mm deep with necessary refilling with bitumen etc. complete.	845.96	Square Metre	151951.34
7.15	20	Providing structural steel work in trusses, other similar trussed purlins and members with all bracing, gusset plates etc. as per detailed designs and drawings or as directed including cutting, fabricating, hoisting, erecting fixing in position, Making riveted/ bolted/ welded connection and one coat of anti corrosive paint and over it 2 coats of oil painting approved quality and shade etc. complete.	119459.00	Metric Tonne	854131.85
381.41	21	Providing and fixing colour coated Zinalume (R) AZ 150 (min150 gms /sq.mt. total on each side) profiled sheets for roofing. The feed material is manufactured out of nominal 0.45mm Base Metal Thickness (BMT) (0.5mm TCT), Hi-strength steel with min. 550 MP a yield strength, metallic hot dip coated with Aluminium- Zinc alloy (55% aluminium 43.4% zinc 1.6% silicon) with COLOR BOND (R) steel quality super durable polyester paint coat (with in organic pigment). The paint shall have a total coating thickness of nominal 35um, comprising of nominal 25 um exterior coat on top surface and nominal 10um reverse coat on back surface. Profile sheet shall have nom. 950-1050 mm effective cover width and nominal 25-30 mm deep ribs with subtle square fluting in the five panat nominal 180-250 mm center-to-center. The endrib shall be designed for anti-capillary groove. and return leg. The feed material should have coil manufacturers product details marked a regular interval. Including fasteners with min. fastened with min. 25um Zinc-Tin alloy coated, Hexhead, self-drilling screw etc. complete. (weight of profile 4.52Kilogram / Square Metre).	1173.00	Square Metre	447393.93
2.00	22	Turbo ventilator 24" MATERIAL RATES FOR SSR For Year 2021-22, Page no. 374, Building (Bd-R : Roofing and ceiling)	9702.00	No.	19404.00
6.90	23	Providing and fixing UPVC Roof made up of 3 layers roofing material of thickness 2mm having width of 1130mm and of required Length having Tensile strength not less than 330Kilo gram/ cm ² , including fastening with self drilling screw having washers made of stainless steel etc. complete.	1594.00	Square Metre	10998.60
				Total Rs.	2643178.11
			Part A)	Say Rs.	2643178.00
51.38	24	Royalty Charges for sand	237.37	Cum	12196.07
110.27		Royalty Charges for Rubble and HM	216.18	Cum	23838.17
				Total Rs.	36034.24
			Part B)	Say Rs.	36034.00




 Chartered Engineer
Gaurav Rajendra Bhaskar
 B.E.(Civil) A.M.I.E.
 Chartered Engineer
 AM3023322


 Consulting Engineer
SAI CONSULTANT
 Consulting Civil Engineer
 Rahuri, Dist. Ahmednagar

- 12 Providing Brick masonry in cement mortal 1:6 using second Class Burnt Bricks in foundation and plinth of inner walls/ in plinth of external walls including bailing out water manually, striking joints on unexposed face, watering and scaffolding complete Bd. G. 1, Page No.313,

Long Wall Ground Beams	6	x	4.38	x	0.23	x	0.40	=	2.42	cum
Short Wall Ground Beams	2	x	8.84	x	0.23	x	0.20	=	0.81	
							Total		3.23	
							Total Qty	=	3.23	cum

- 13 Providing second class Burnt Brick masonry with conventional/ I.S. type bricks in cement mortar 1:6 in superstructure including striking joints, raking out joints, watering and scaffolding etc. Complete

Long Wall Ground Beams	6	x	4.38	x	0.23	x	3.00	=	18.13	cum
Short Wall Ground Beams	2	x	8.84	x	0.23	x	3.00	=	12.20	
							Total	=	30.33	
Deduction										
Deduction For RS	3	x	3.00	x	0.23	x	3.00	=	6.21	
Deduction For W1	4	x	1.50	x	0.23	x	1.20	=	1.66	
Lintel Beam	6	x	4.38	x	0.23	x	0.30	=	1.81	
	2	x	4.42	x	0.23	x	0.30	=	0.61	
	2	x	8.84	x	0.23	x	0.30	=	1.22	
									11.51	
							Total	=	18.82	
							Total Qty	=	18.82	cum

- 14 Providing sand faced plaster externally in cement mortar using approved screened sand, in all positions including base coat of 15 mm thick in cement mortar 1:4 using waterproofing compound at 1 kg per cement bag curing the same for not less than 2-days and keeping the surface of the base coat rough to receive the sand faced treatment 6 to 8 mm thick in cement mortar 1:4 finishing the surface by taking out grains and curing for fourteen days scaffolding etc.complete.

Long Wall up to Plinth	2	x	18.71			x	1.00	=	37.42	Sqm
Short Wall up to Plinth	2	x	9.60			x	1.00	=	19.20	
Long Wall Above Plinth	2	x	18.71			x	3.00	=	112.26	
Short Wall Above Plinth	2	x	9.60			x	3.00	=	57.60	
							Total		226.48	
Deduction										
Deduction For RS Both Side	6	x	3.00			x	3.30		59.40	
Deduction For W1	8	x	1.50			x	1.20		14.40	
							Total		73.80	
							Total Qty	=	152.68	Sqm

- 15 Providing and fixing steel window of various sizes as per detailed drawing without hotdip zinc coating, with out ventilators, including fabricating/ glazing with plain/ obscured glass panels of approved type and quality, iron oxidised fixtures and fastenings, finishing with oil painting two coats complete (with guard bars 12 mm square at 10 cm c/c.)

W1	4	x	1.50			x	1.20	=	7.20	Sqm
							Total Qty	=	7.20	Sqm



- 16 Providing and applying white-wash in one coat on old/ new plastered or masonry surfaces and asbestos cement sheets including scaffolding and preparing the surface by brushing and brooming down etc. complete.
- Qty.As per Item no.17 = 152.68 Sqm
- Total Qty = 152.68 Sqm**
- 17 Providing and applying plastic emulsion paint of approved quality, colour and shade to old and new surfaces in two coats including scaffolding, preparing the surface. (excluding the primer coat) etc. complete.
- Qty.As per Item no.17 = 152.68 Sqm
- Total Qty = 152.68 Sqm**
- 18 Providing and fixing rolling shutter fabricated from steell at hsofminimum thickness 0.9mm with lock plate of 3.15 mm thickness reinforced with 35x35x5mm angle section fitted with sliding bolts and handles for both sides, deep M.S.channel section of depth and thickness not less than 65mm and 3.15mm respectively with hold fastarr angements, M.S.Bracket plate 300x300x3.15mm minimum size and shape with square bar, suspension shaft of minimum 32mm diameter, hood cover of M.S. sheet not less than 0.9mm thickness and of any size attopand safety device sincluding mechanical gear operation arrangement consisting of worm gear wheels and worms of high grade castir on or mild steel and one coat of redlead primer etc. complete.(I.S.62481979) (Without mechanical gear)
- RS 3 x 3.00 x 3.50 = 31.50 Sqm
- Total Qty = 31.50 Sqm**
- 19 Providing and laying in situ cement concrete M20 with tremix treatment for 100 mm thickness for flooring with groove cutting of 4mm wide and 20mm deep with necessary refilling with bitumen etc. complete.
- Warehouse Flooring 1 x 18.71 x 9.60 = 179.62 Sqm
- Total Qty = 179.62 Sqm**
- 20 Providing structural steel work in trusses, other similar trussed purlins and members with all bracing, gusset plates etc. as per detailed designs and drawings or as directed including cutting, fabricating, hoisting, erecting fixing in position, Making riveted/ bolted/ welded connection and one coat of anti corrosive paint and over it 2 coats of oil painting approved quality and shade etc. complete.
- Total No. of Truss With Purlin 5 x 1250.00 = 6250.00 MT
- Varandah Canopy 3 x 300.00 = 900.00
-
- 7150.00
- Total Qty = 7.15 MT**



- 21 Providing and fixing colour coated Zinalume (R) AZ 150 (min150 gms /sq.mt. total on each side) profiled sheets for roofing. The feed material is manufactured out of nominal 0.45mm Base Metal Thickness (BMT) (0.5mm TCT), Hi-strength steel with min. 550 MP a yield strength, metallic hot dip coated with Aluminium- Zinc alloy (55% aluminium 43.4% zinc 1.6% silicon) with COLOR BOND (R) steel quality super durable polyester paint coat (with in organic pigment). The paint shall have a total coating thickness of nominal 35um, comprising of nominal 25 um exterior coat on top surface and nominal 10um reverse coat on back surface. Profile sheet shall have nom. 950-1050 mm effective cover width and nominal 25-30 mm deep ribs with subtle square fluting in the five panat nominal 180-250 mm center-to-center. The endrib shall be designed for anti-capillary groove. and return leg. The feed material should have coil manufacturers product details marked a regular interval. Including fasteners with min. fastened with min. 25um Zinc-Tin alloy coated, Hexhead, self-drilling screw etc. complete. (weight of profile 4.52Kilogram / Square Metre).

Roof Slop	2	x	5.00	x	18.71	=	187.10	Sqm
Verandah	3	x	3.40	x	2.00	=	20.40	
Vertical Sheets Long Wall	2	x	18.71	x	3.40	=	127.23	
Vertical Sheets Short Wall	2	x	9.60	x	3.40	=	65.28	
						Total =	400.01	
Deduction For Turbo Ventilator & Sky light Upvc roof	2.00	x	3.00	x	1.15	=	6.90	
Deduction For RS	3.00		3.00		1.30		11.70	
						Total	18.60	
						Total Qty =	381.41	Rmt

- 22 Turbo ventilator 24" MATERIAL RATES FOR SSR For Year 2021-22, Page no. 374, Building (Bd-R : Roofing and ceiling)

At Roof Level Ventilation

	=	2.00	No.
Total Qty =		2.00	No.

- 23 Providing and fixing UPVC Roof made up of 3 layers roofing material of thickness 2mm having width of 1130mm and of required Length having Tensile strength not less than 330Kilo gram/ cm², including fastening with self drilling screw having washers made of stainless steel etc. complete.

2.00	x	3.00	x	1.15	=	6.90	Sqm
					Total Qty =	6.90	Sqm

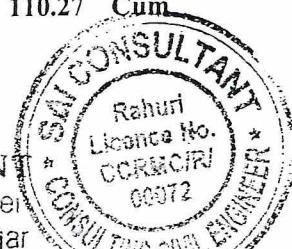
- 24 Royalty Charges

	Material	Qty	Qty of Material	Cum
6	Providing and filling in the foundation	1 x 9.47	x 1.000	= 9.47 Cum
7	Providing and laying Cast in situ/ R	1 x 18.93	x 0.470	= 8.90
8	Providing and laying in situ cement	1 x 6.69	x 0.425	= 2.84
9	Providing and laying Cast in situ/R	1 x 3.58	x 0.425	= 1.52
10	Providing second class Burnt Brick	1 x 9.15	x 0.425	= 3.89
14	Providing sand faced plaster external	1 x 152.68	x 0.033	= 5.04
12	Providing Brick masonry in cement	1 x 3.23	x 0.320	= 1.03
13	Providing second class Burnt Brick	1 x 18.82	x 0.320	= 6.02
14	Providing sand faced plaster external	1 x 152.68	x 0.033	= 5.04
19	Providing and laying in situ cement	1 x 179.62	x 0.043	= 7.63
			Sand Total Qty =	51.38 Cum
3	Providing dry trap/ granite/ quartzite	1 x 43.55	x 1.00	= 43.55
5	Filling in plinth and floors with concrete	1 x 66.72	x 1.00	= 66.72
		Hm and Rubble Total Qty =	110.27	Cum

Gurhaskae
Chartered Engineer
Gaurav Rajendra Bhaskar
B.E.(Civil) A.M.I.E.
Chartered Engineer

Zadhav
Consulting Engineer

SAI CONSULTANT
Consulting Civil Engineer
Rahuri, Dist. Ahmednagar



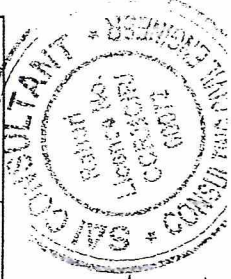
Name of work :- Proposed Construction of Cleaning & Grinding Shed In G.no.185 Paiki, For Sayaji Agro Fertilizer Co. Ltd., At- Shelka Dhanora, Tal-Kalamb, Dist: Usmanabad (MH)

RATE ANALYSIS AS PER PWD SSR 2022-23 For MAHARASTRA STATE

Sr. No.	Description of Item	S.S.R. Page No. & It. No.	Basic Rate	Add extra lead charges for.....						Total Lead charges	Gross Rate
				Rubble/Cr. Metal	Sand	Cr. Metal	Murum	Cement/Steel			
1	Excavation for foundation in earth, soil of all types, sand, gravel	21.02	207.00	502.27	345.15 /M ³	355.50 /M ³	252.22 /M ³		5.22 /M.T.	0.00	207.00
2	Excavation for foundation in Hard murum in cluding removal	21.08	284.00							0.00	284.00
3	Providing dry trap/ granite/ quartzite/ gneiss rubble stone soil	21.38	1382.00	1.00	502.27					502.27	1884.27
4	Filling in plinth and floors with approved excavated material	21.36	120.00							0.00	120.00
5	Filling in plinth and floors with contractors material/ brought	21.37	795.00				1.00	252.22		252.22	1047.22
6	Providing and filling in the foundation with sand of approved	21.39	2160.00		1.00	345.15				345.15	2505.15
7	Providing and laying Cast in situ/ Ready Mix cement concrete	24.01	5830.00		0.47	162.22	0.940	334.17	4.40	22.97	6349.36
8	Providing and laying in situ cement concrete of M-25 grade	25.13	7287.00		0.425	146.69	0.85	302.18	7.50	39.15	7775.02
9	Providing and laying Cast in situ/Ready Mix cement concrete	25.33	13967.00		0.425	146.69	0.85	302.18	7.50	39.15	14455.02
10	Providing and laying Cast in situ/Ready Mix cement concrete	25.52	12452.00		0.425	146.69	0.85	302.18	7.50	39.15	12940.02
11	Providing and fixing in position TMT - FE - 500 bar reinforcement	26.33	89703.00							0.00	89703.00
12	Providing Brick masonry in cement mortar 1.6 using second	27.01	7755.00		0.32	110.45			1.58	8.25	7873.70
13	Providing second class Burnt Brick masonry with conventional	27.05	7994.00		0.32	110.45			1.58	8.25	8112.70
14	Providing sand faced plaster externally in cement mortar using	32.11	639.00		0.033	11.39			0.25	1.31	651.70
15	Providing and fixing steel window of various sizes as per detail	39.20	4874.00							0.00	4874.00
16	Providing and applying white-wash in one coat on old/ new	36.02	8.00							0.00	8.00
17	Providing and applying plastic emulsion paint of approved quality	36.12	80.00							0.00	80.00
18	Providing and fixing rolling shutter fabricated from steel at	39.25	5308.00							0.00	5308.00
19	Providing and laying in situ cement concrete M20 with tremie	33.30	796.00		0.043	14.67	0.089	31.64	0.70	3.65	845.96
20	Providing structural steel work in trusses, other similar trusses	23.04	119459.00							0.00	119459.00
21	Providing and fixing colour coated Zincalume (R) AZ 150 (r	38.34	1173.00							0.00	1173.00
22	Turbo ventilator 24" MATERIAL RATES FOR SSR For Year	SSR 22-23, Page no. 374 I.no.42	9702.00							0.00	9702.00
23	Providing and fixing UPVC Roof made up of 3 layers roofing	38.37	1594.00							0.00	1594.00
24	Royalty Charges for Rubble and HM		216.18							0.00	216.18

Rajeshkar
Chartered Engineer
Gaurav Rajendra Bhaskar
B.E.(Civil) A.M.I.E.
Chartered Engineer

Sachka
Consulting Engineer
SAI CONSULTANT
Consulting Civil Engineer
Rahuri, Dist. Ahmednagar



Name of work :- Proposed Construction of Cleaning & Grading Shed In G.no.185 Paiki, For Sayaji Agro Producer Co. Ltd., At- Shelka Dhanora, Tal-Kalamb, Dist: Usmanabad (MH)

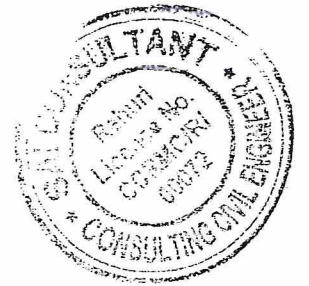
Appendix - I

Lead Chart

Sr. No.	Description	Rubble	Murum	Crush metal	Crush metal 40 mm above	Crush Sand	Cement	Steel	Asphalt
1	2	3	4	4	4	5	6	7	8
	Source	Restricted	Local	Restricted	Restricted	Restricted	Local	Local	
1	Average lead as per Quarry chart in km	15.00	5.00	15.00	15.00	15.00	1.00	1.00	
2	Lead charges	502.27	252.22	355.50	410.55	345.15	104.39	104.39	
4	Extra lead charges	502.27	252.22	355.50	410.55	345.15	104.39	104.39	
5	Extra lead charges per bag of cement						5.22		

G. Bhaskar
Chartered Engineer
Gaurav Rajendra Bhaskar
B.E.(Civil) A.M.I.E.
Chartered Engineer
AM3023322

Sachin
Consulting Engineer
SAI CONSULTANT
Consulting Civil Engineer
Rahuri, Dist. Ahmednagar



Name of work :- Proposed Construction of Cleaning & Grading Shed In G.no.185 Paiki, For Sayaji Agro Producer Co. Ltd., At-Shelka Dhanora, Tal-Kalamb, Dist: Usmanabad (MH)

Quarry Chart



LEAD STATEMENT

Material	Quarry	Lead in Km.
Rubble	Kalamb	15.00
Metal	Kalamb	15.00
Crushed Metal	Kalamb	15.00
Murum	Local	5.00
Crush Sand	Kalamb	15.00

CERTIFICATE.

- 1 Certified that the quarries shown on the quarry chart for metal & murum are inspected by me & they are nearest & economical to the work & contain sufficient & good quality material required for the work.
- 2 Certified that lead for quarries shown and accounted in the estimate is as per nearest route.
- 3 Certified that leads considered are found to be correct.

Gurabaskar
Chartered Engineer
Gaurav Rajendra Bhaskar
B.E.(Civil) A.M.I.E.
Chartered Engineer
AM3023322

Saaha
Consulting Engineer
SAI CONSULTANT
Consulting Civil Engineer
Rahuri, Dist. Ahmednagar

